

SPEC SHEET

MW500-1448

2747 MHz to 3238 MHz

VOLTAGE CONTROLLED OSCILLATORS



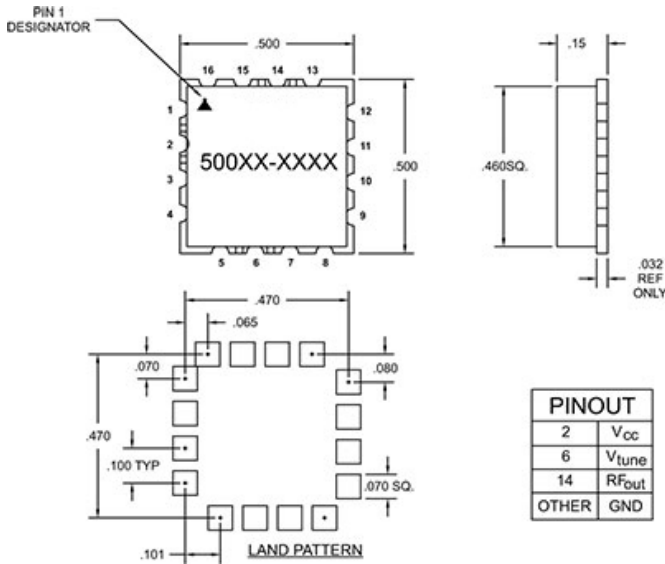
Specifications

Frequency	2747 MHz to 3238 MHz
Tuning Voltage	0.5/15 V
Power Output	4 +/- 2 dBm
Phase Noise	10 kHz Offset -97 (typ) dBc/Hz 100 kHz Offset -118 (typ) dBc/Hz
Frequency Pushing	3 MHz/V
Frequency Pulling	15 MHz
Harmonic Suppression	-10 (MAX)

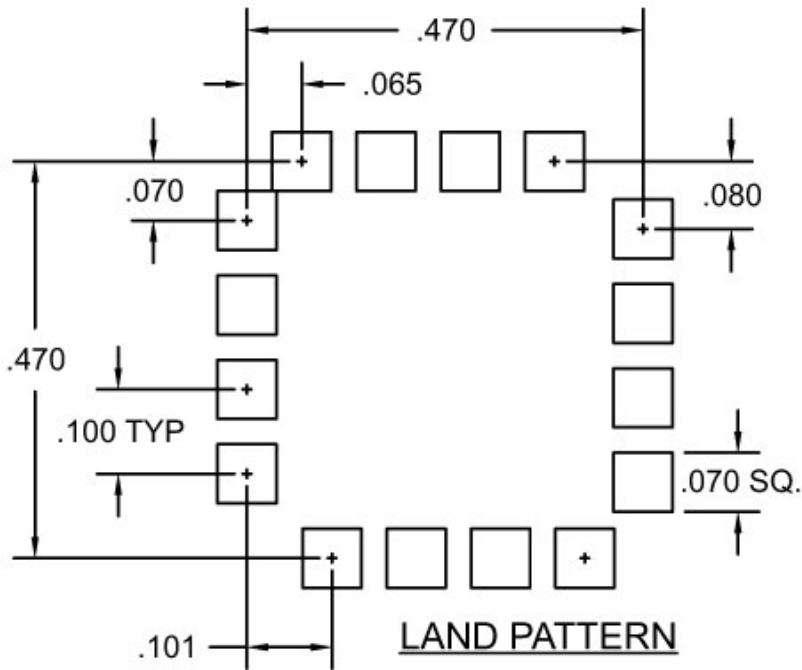
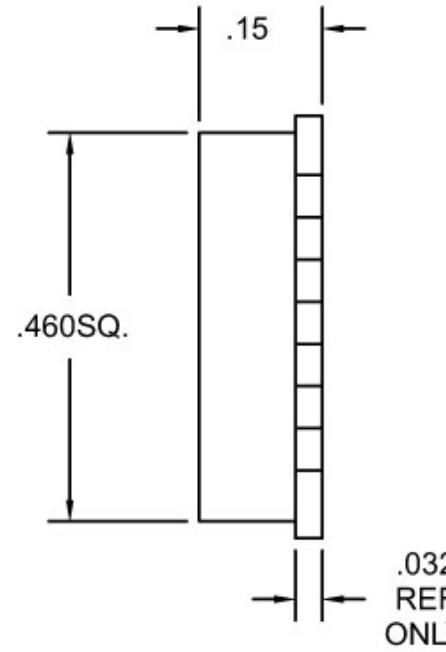
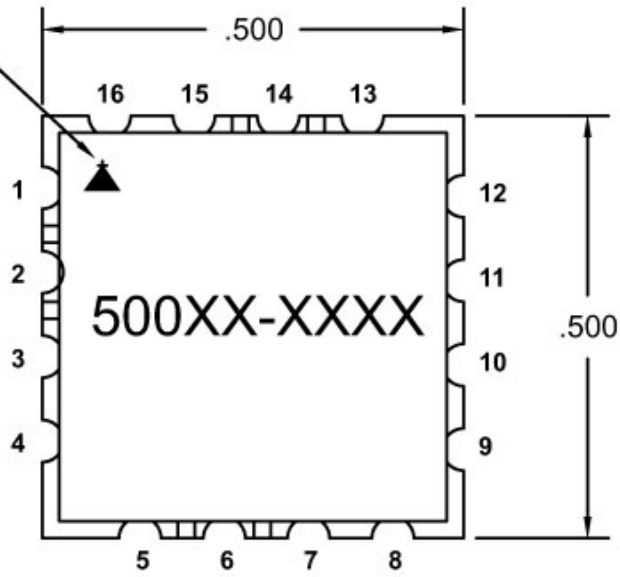
Operating Specifications

Supply Voltage	5 Vcc
Supply Current	25 mA
Load Impedance	50
Operating Temperature	-40 to 85 °C

Notes



PIN 1
DESIGNATOR



PINOUT	
2	V_{cc}
6	V_{tune}
14	RF_{out}
OTHER	GND