

SPEC SHEET

MW500-1131

2400 MHz to 3400 MHz

VOLTAGE CONTROLLED OSCILLATORS



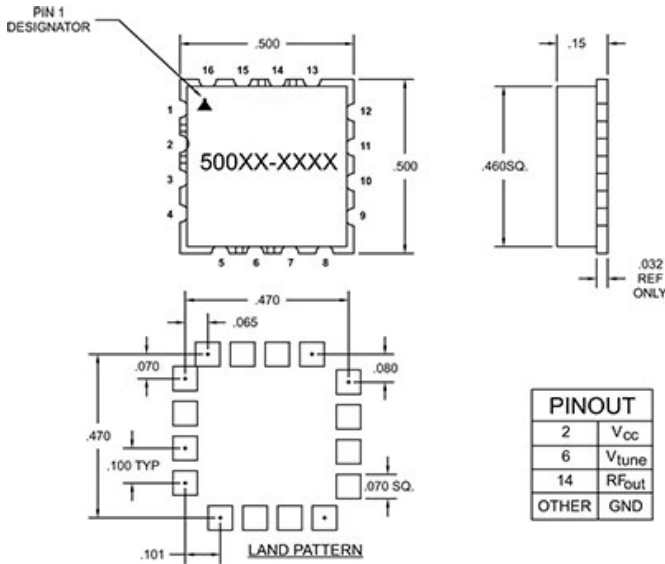
Specifications

Frequency	2400 MHz to 3400 MHz
Tuning Voltage	0.5/18 V
Power Output	9 +/- 3 dBm
Phase Noise	10 kHz Offset -90 (typ) dBc/Hz 100 kHz Offset -112 (typ) dBc/Hz
Frequency Pushing	1 MHz/V
Frequency Pulling	50 MHz
Harmonic Suppression	-20 (MAX)

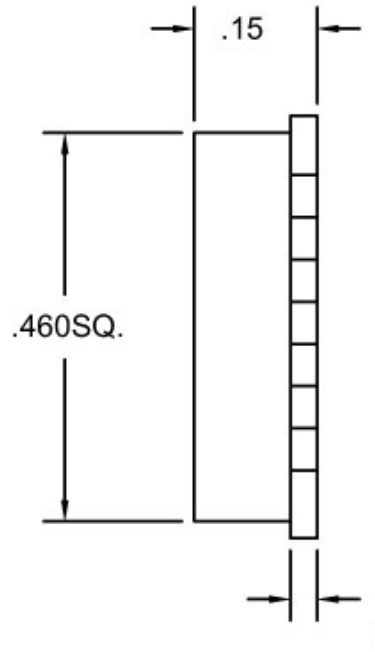
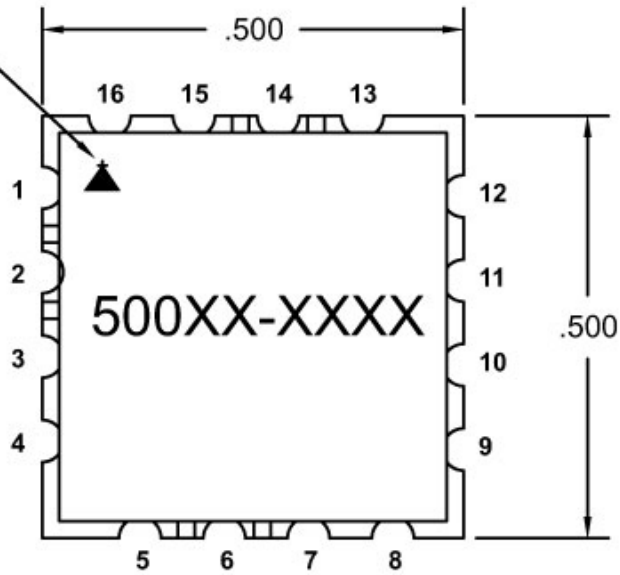
Operating Specifications

Supply Voltage	5 Vcc
Supply Current	35 mA
Load Impedance	50
Operating Temperature	-30 to 75 °C

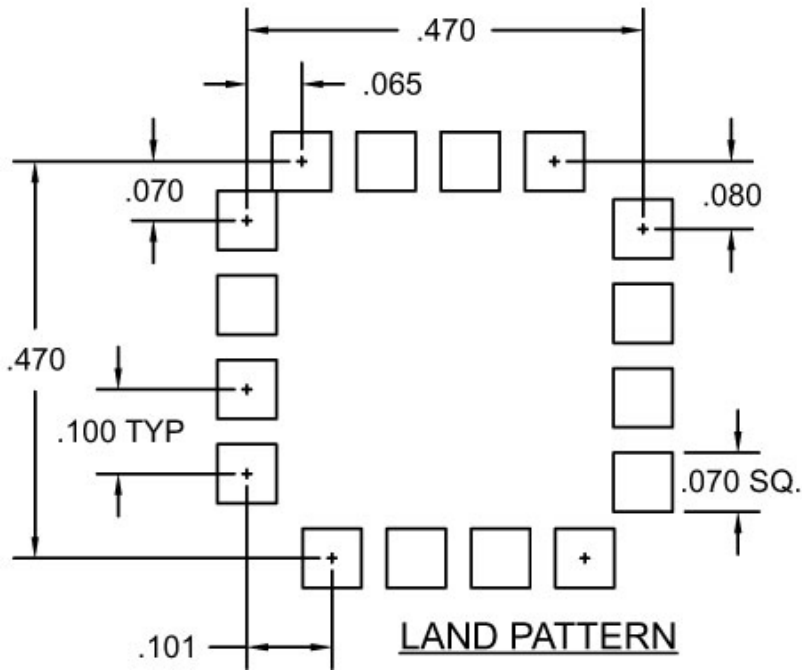
Notes



PIN 1
DESIGNATOR



.032
REF
ONLY



PINOUT	
2	V _{cc}
6	V _{tune}
14	R _{Fout}
OTHER	GND