

SPEC SHEET

# MW500-1109

## 1300 MHz to 2500 MHz

### VOLTAGE CONTROLLED OSCILLATORS



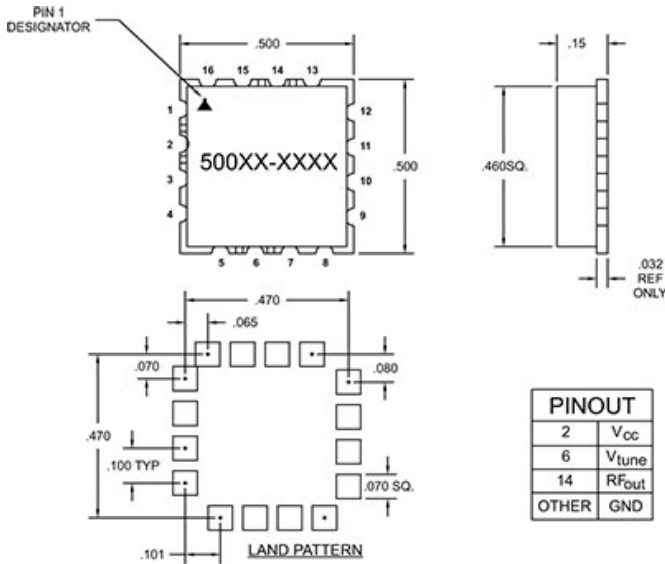
### Specifications

Frequency	1300 MHz to 2500 MHz
Tuning Voltage	0.5/18 V
Power Output	7 +/- 1.5 dBm
Phase Noise	10 kHz Offset -96 (typ) dBc/Hz 100 kHz Offset -117 (typ) dBc/Hz
Frequency Pushing	8 MHz/V
Frequency Pulling	15 MHz
Harmonic Suppression	-8 (MAX)

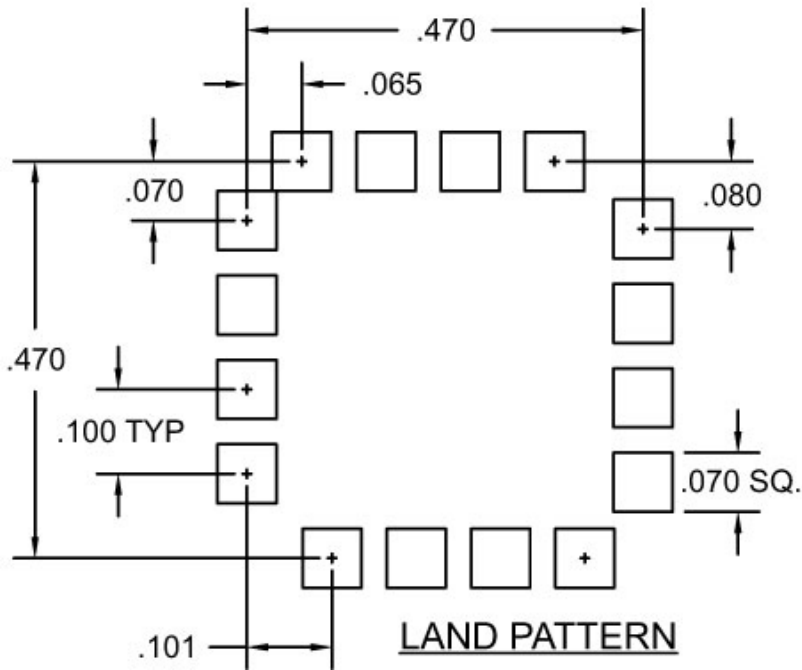
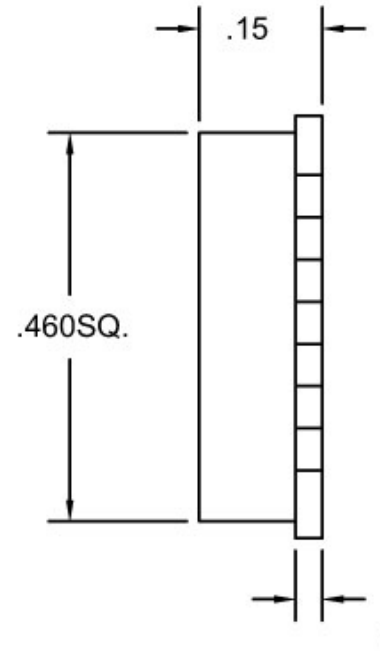
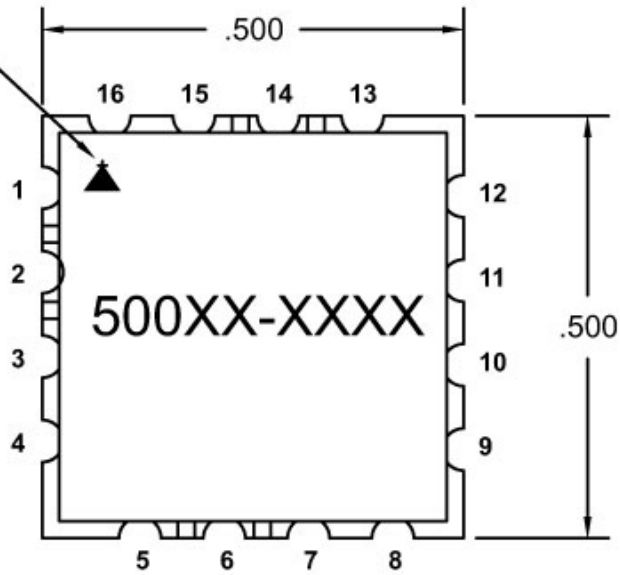
### Operating Specifications

Supply Voltage	12 Vcc
Supply Current	30 mA
Load Impedance	50
Operating Temperature	-40 to 80 °C

### Notes



PIN 1  
DESIGNATOR



PINOUT	
2	V <sub>cc</sub>
6	V <sub>tune</sub>
14	R <sub>Fout</sub>
OTHER	GND